

## Features & Options

- Quick-Response Sensor and Well-Vented Sensor Guard
- BAPI-Box 2 IP66 Rated Enclosure Style

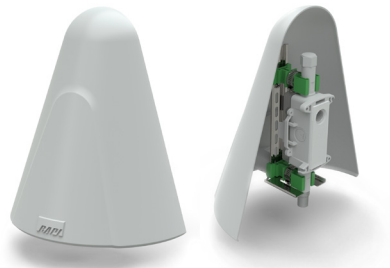
Outside Air Units are designed to be mounted outdoors. The UV-resistant plastic shield keeps the sensor out of the sunlight and allows for excellent air circulation. The unit comes in a BAPI-Box 2 polycarbonate IP66 rated enclosure.

All Outside Air Units have etched Teflon leadwires and can withstand high humidity and condensation and perform under real world conditions. This is especially important in an outside air application which can be exposed to rain, snow and large temperature swings.

### Weather Shade

External sensors are affected by radiant heat from buildings and parking lots. The BAPI Weather Shade blocks the radiant heat, improving the sensor accuracy.

See the Accessories for more info.



**BAPI-Box 2  
Enclosure**

## ORDERING INFORMATION

### BA/10K-2-O-BB2

Outdoor Air Temperature Sensor: 10K-2 Thermistor, BAPI-Box 2 Enclosure IP66

### BA/10K-3-O-BB2

Outdoor Air Temperature Sensor: 10K-3 Thermistor, BAPI-Box 2 Enclosure IP66

### BA/10K-4-O-BB2

Outdoor Air Temperature Sensor: 10K-4 Thermistor, BAPI-Box 2 Enclosure IP66

## Specifications

### Environmental Operation Range:

Temperature: -40 to 85 °C

Humidity: 0 to 100%, non-condensing

### Temp Sensing Element & Accuracy:

10K-2 Thermistor:  $\pm 0.2^{\circ}\text{C}$  (0 to 70°C)

10K-3 Thermistor:  $\pm 0.2^{\circ}\text{C}$  (0 to 70°C)

10K-4 Thermistor:  $\pm 1\%$  @ 25°C

### Enclosure Rating:

IP66

### Enclosure Material:

UV-resistant polycarbonate, UL94, V-0

